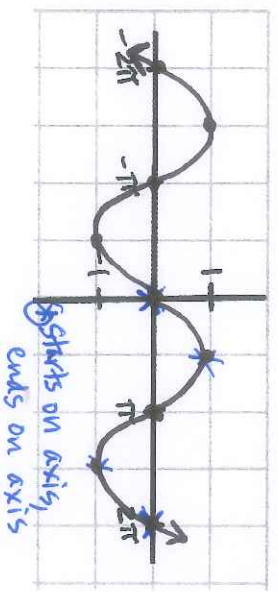
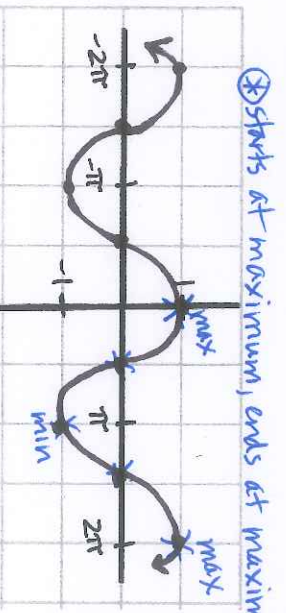


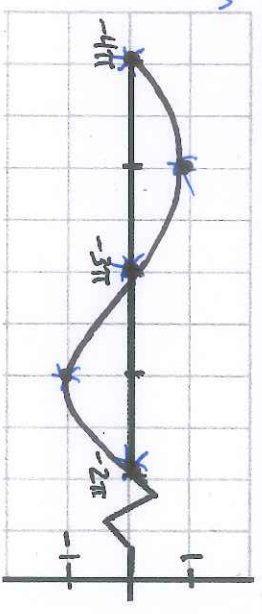
1) $y = \sin x$



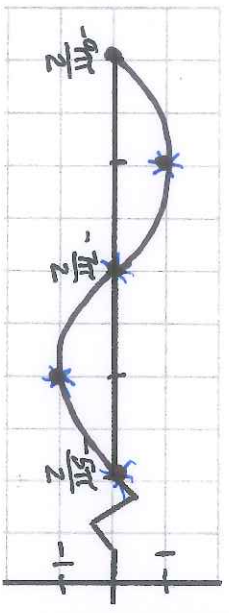
2) $y = \cos x$



3) $y = \sin x$ (only graph for $-4\pi \leq x \leq -2\pi$ as given)

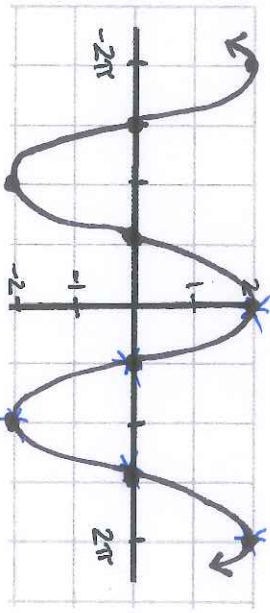


4) $y = \cos x$

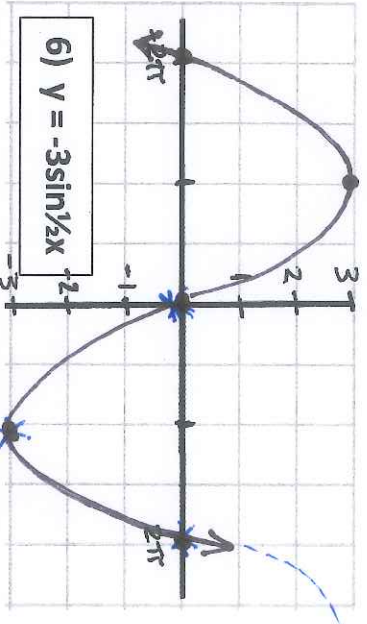


#4-12 → Sketch only for the given increments!

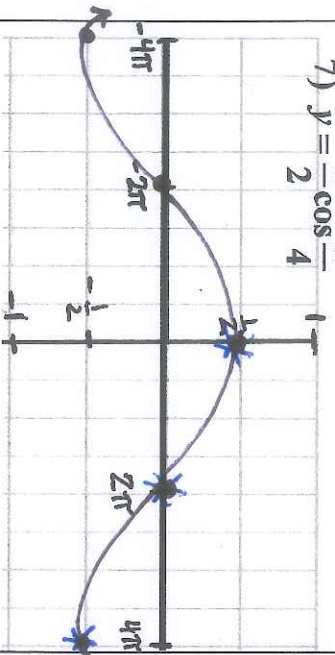
5) $y = 2\cos x$



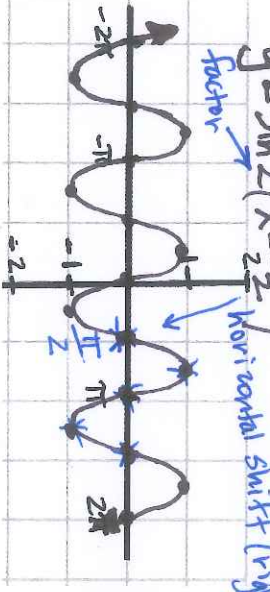
6) $y = -3\sin \frac{1}{2}x$



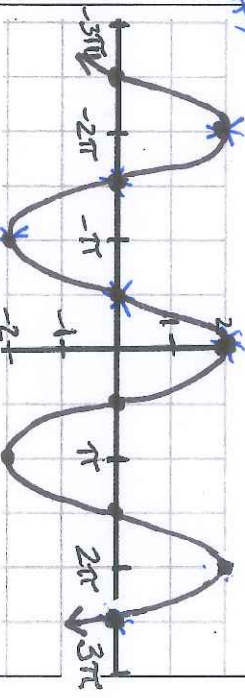
7) $y = \frac{1}{2} \cos \frac{x}{4}$



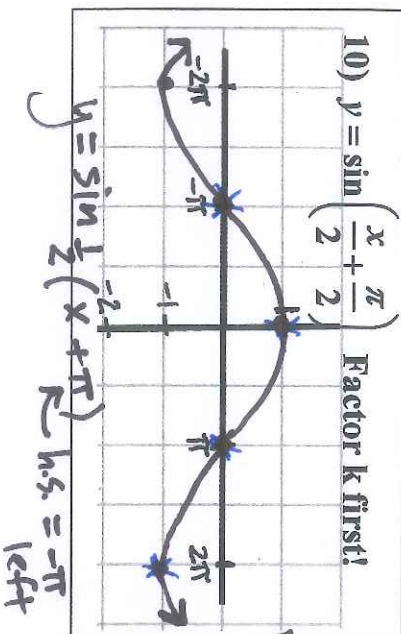
8) $y = \sin 2(x - \frac{\pi}{2})$ Hint: factor k first!



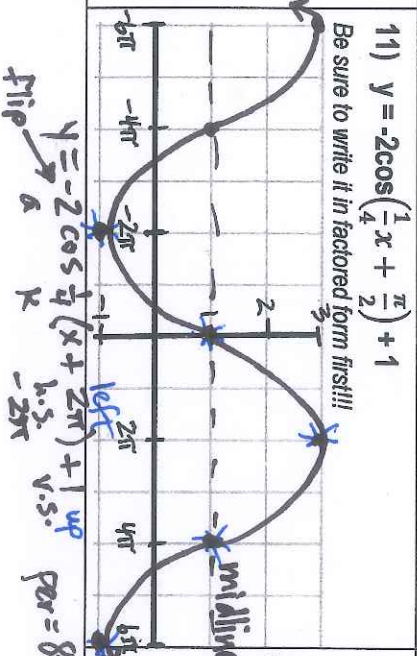
9) $y = 2\cos(x + 2\pi)$ h.s. = -2π (left)



10) $y = \sin(\frac{x}{2} + \frac{\pi}{2})$ Factor k first!



11) $y = -2\cos(\frac{1}{4}x + \frac{\pi}{2}) + 1$ Be sure to write it in factored form first!!!



12) $y = -\sin(2x - 3\pi) + 3$ Be sure to write it in factored form first!!!

